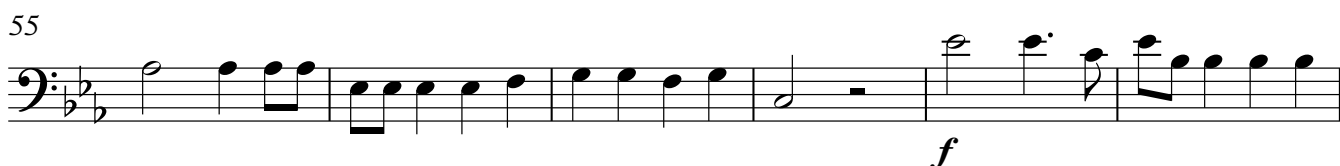
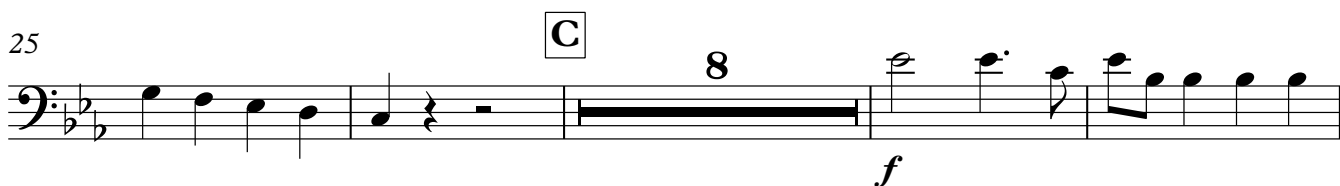
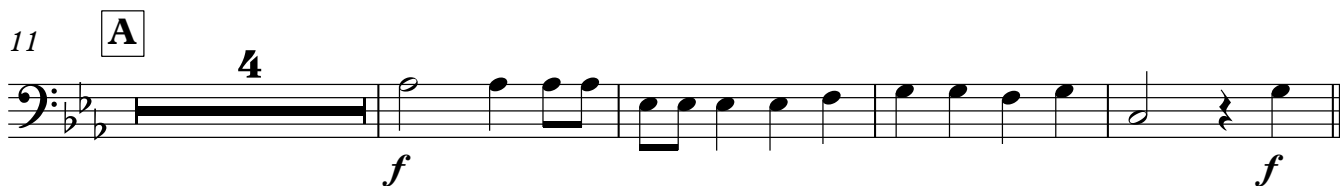


The Wellerman

New Zealand Folk Song

Arr. Klaus Breuninger

♩=96



65

Musical notation for Bassoon, measure 65. The staff is in bass clef with a key signature of two flats (B-flat and E-flat). The notation consists of four measures. The first two measures each contain a half note. The third measure contains a whole note. The fourth measure contains a quarter note followed by a quarter rest and a whole rest. A dynamic marking *sf* is placed below the staff, with a wedge-shaped hairpin pointing to the right, starting under the third measure and ending under the fourth measure. The *ff* marking is placed below the staff, with a wedge-shaped hairpin pointing to the left, starting under the fourth measure and ending under the third measure. The *ff* marking is also positioned above the quarter note in the fourth measure.